



**APEX DYNAMICS, USA**

*First In Helical Technology...*

1363-10 Lincoln Avenue  
Holbrook, NY 11741  
Tel: (631) 244-9040 Fax: (631) 244-9030

E-Mail: [philshaw@apexdynamicsusa.com](mailto:philshaw@apexdynamicsusa.com)  
Internet: [www.apexdynamicsusa.com](http://www.apexdynamicsusa.com)

---

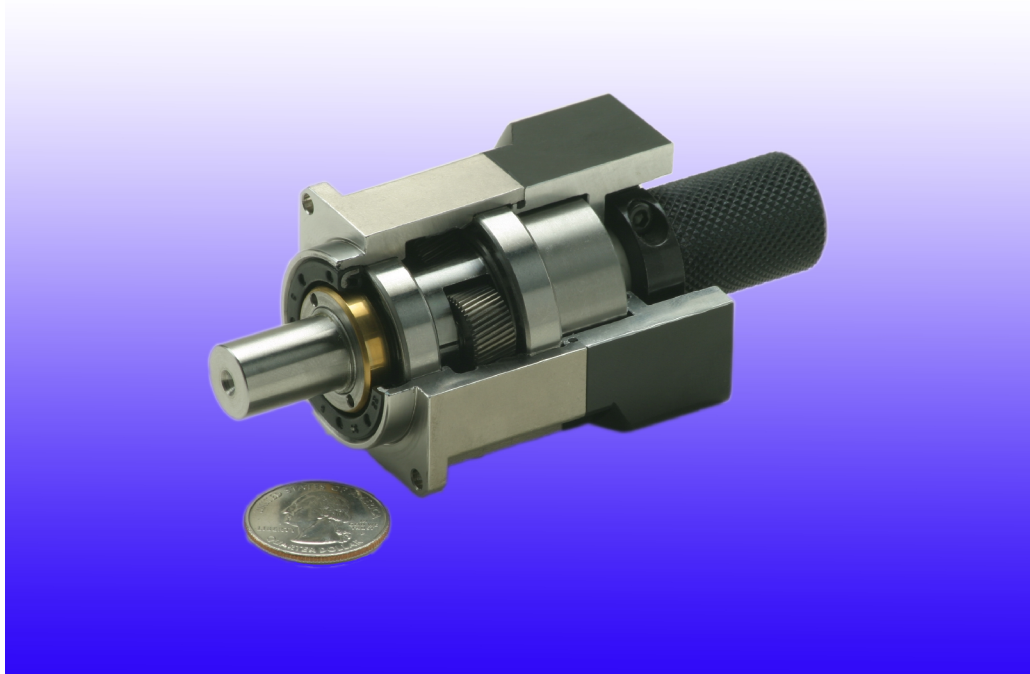
## NEWS RELEASE

---

For Immediate Release

Contact: Phil Shaw

### Apex Dynamics USA Releases the Only High Precision 42mm Helical Planetary In the WORLD!



Product Name: Apex Dynamics Inline and Right Angle Helical Gearheads

Model: AB/AF/ABR/AFR 42 (42mm square)

Description: Every Single Stage ratio 3,4,5,6,7,8,9 & 10 :1 , with std double stages ranging from 15-200:1

Unique operating features: Patent # 6,503,168 allows up to 10,000 rpm input, 5 & 3 arc-minutes of backlash

**Foot Print: 42mm Square – less than 60mm in length**

Motor Mounting Capability: Mounts to all Servo and Stepper motors

Product Sizes: 42mm (the only 42mm in the world)

Safety Features / IP Rating / Housing Material: Stainless Steel output housing rated at IP65 – 5-year warranty – guaranteed 2 week delivery or its FREE

**The Most Productive Helical Planetary Gearhead Manufacturer in the World!**

Please contact Phil Shaw

At Apex Dynamics USA for more information

(631) 244-9040 - (631) 244-9030 Fax