



APEX DYNAMICS, USA

First In Helical Technology...

1363-10 Lincoln Avenue

Holbrook, NY 11741

Tel: (631) 244-9040 Fax: (631) 244-9030

E-Mail: philshaw@apexdynamicsusa.com

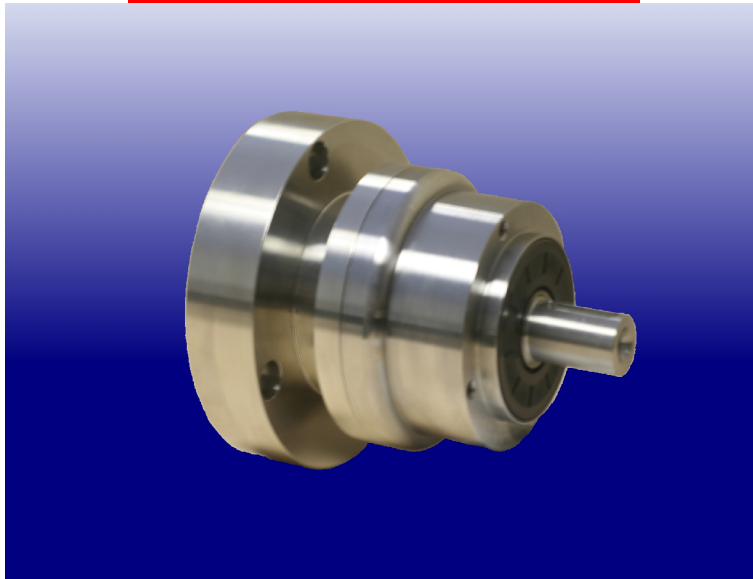
Internet: www.apexdynamicsusa.com

NEWS RELEASE

For Immediate Release

Contact: Phil Shaw

Apex Dynamics USA Releases the NEW Stainless Steel AE Series



Apex Dynamics releases the new 100% Stainless Steel, High Torque AE series. Developed specifically for wash down applications found in food processing and packaging operations. The AE utilizes 300 series Stainless to ensure corrosion resistance in the most severe applications.

Available motor mounting designs are available from STOCK which includes common Stainless Motors from Allen Bradley (MPS series) and Baldor (SSBSM series).

The True Helical gear design increases tooth-to-tooth contact ratio by over 50% vs. the standard spur gearing geometry. The Helix angle is optimized and produces smooth and quiet operation at extreme speeds. (Less than 1 arc-min, less than 56dB, up to 10,000rpms input).

The product is offered in 3 sizes (AE 070, AE090 & AE120) and is equipped with EVERY single stage ratio (3,4,5,6,7,8,9 & 10:1) along with more binary (double stage) ratios than any other competitor.

Covered by the industry leading 5-year tip to toe warranty and delivery is guaranteed with in two weeks or it's FREE. – Units are fully stocked and ready for immediate shipment.

The Most Productive Helical Planetary Gearhead Manufacturer in the World!

Please contact Phil Shaw

At Apex Dynamics USA for more information

(631) 244-9040 - (631) 244-9030 Fax