



**APEX DYNAMICS, USA**

*First In Helical Technology...*

1363-10 Lincoln Avenue  
Holbrook, NY 11741  
Tel: (631) 244-9040 Fax: (631) 244-9030

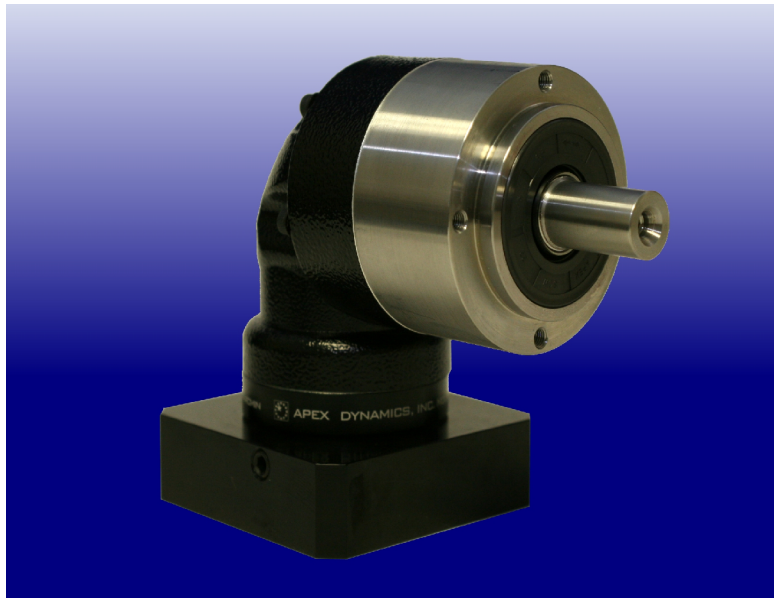
E-Mail: [philshaw@apexdynamicsusa.com](mailto:philshaw@apexdynamicsusa.com)  
Internet: [www.apexdynamicsusa.com](http://www.apexdynamicsusa.com)

## NEWS RELEASE

For Immediate Release

Contact: Phil Shaw

### Apex Dynamics USA Releases the NEW STAINLESS STEEL Precision Helical AER Series



Apex Dynamics releases the new Medium Precision Helical **AER RIGHT ANGLE** series, which utilizes our one-piece shaft carrier design (Patent # 6503168). Supported with our oversized ball bearing straddle mount for increased radial and axial loading capacity. Stainless Steel output housing along with 100% patented sealing technology (IP65) creates a perfect low cost servo grade gearbox for every application.

The overall thickness of the New AER planet gears and increased tooth-to-tooth contact ratio creates torque capacities of over 100% vs. the standard spur gearing geometry (Competitive Models). The Helix angle is optimized and produces smooth and quiet operation at extreme speeds. (Less than 8 arc-min, less than 56dB, up to 10,000rpms input).

The product is offered in 7 sizes (AER 050,070,090,120,155,205,235) and is equipped with every single stage ratio (3,4,5,6,7,8,9,10,14,20:1) along with more binary (double stage) ratios than any other competitor (Up to 200:1).

Covered by the industry leading 5-year tip to toe warranty and delivery is guaranteed within two weeks or it's FREE. (guaranteed delivery start on Nov 1<sup>st</sup>, 2006).

**The Most Productive Helical Planetary Gearhead Manufacturer in the World!**

Please contact Phil Shaw

At Apex Dynamics USA for more information  
(631) 244-9040 - (631) 244-9030 Fax