



APEX DYNAMICS, USA

First In Helical Technology...

1363-10 Lincoln Avenue

Holbrook, NY 11741

Tel: (631) 244-9040 Fax: (631) 244-9030

E-Mail: philshaw@apexdynamicsusa.com

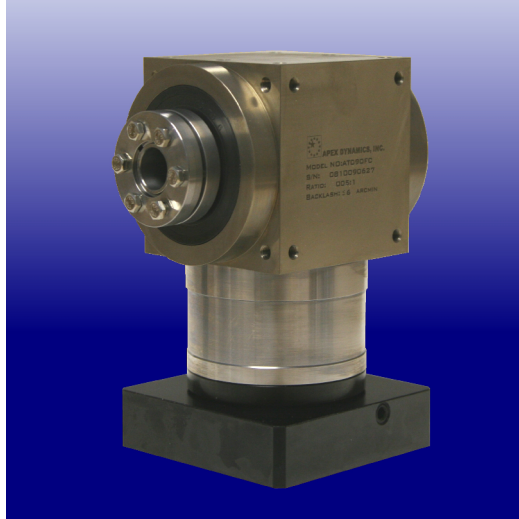
Internet: www.apexdynamicsusa.com

NEWS RELEASE

For Immediate Release

Contact: Phil Shaw

Apex Dynamics USA Releases the NEW Stainless Steel HOLLOW AT-FC Series



Apex Dynamics releases the New Stainless Steel, High Precision **Hollow Shaft** AT-FC series. High Precision ground spiral bevel gear sets are combined with APEX optimized helical planetary geometry to create ratios up to 500:1. Single piece Stainless Steel housing is designed for maximum rigidity and corrosion resistance (also available in 100% Stainless Steel versions). Perfectly square with multiple precision machined surfaces for ease of installation.

The Hollow Shaft Design utilizes two (2) Apex Shrink Disc Power Locks for fretting-free torque transfer to application shafting and/or ball screws.

Available motor mounting designs are available from STOCK which includes common Stainless Motors from Allen Bradley (MPS series) and Baldor (SSBSM series) and our exclusive input shaft option.

The product is offered in 9 sizes (AT-FC 65,75,90,110,140,170,210,240,280mm) and is equipped with 21 ratios, up to 500:1 (which includes Bevel only 1:1 thru 5:1). Up to 3200Nm Torque Capacity, with less than 6 arc-minutes of backlash, 98% Efficiency, and is lubricated for life and is maintenance free.

Covered by the industry leading 5-year tip to toe warranty and delivery is guaranteed within two weeks or it's FREE. – Units are fully stocked and ready for immediate shipment.

The Most Productive Helical Planetary Gearhead Manufacturer in the World!

Please contact Phil Shaw

At Apex Dynamics USA for more information

(631) 244-9040 - (631) 244-9030 Fax