



APEX DYNAMICS, USA

First In Helical Technology...

1363-10 Lincoln Avenue
Holbrook, NY 11741
Tel: (631) 244-9040 Fax: (631) 244-9030

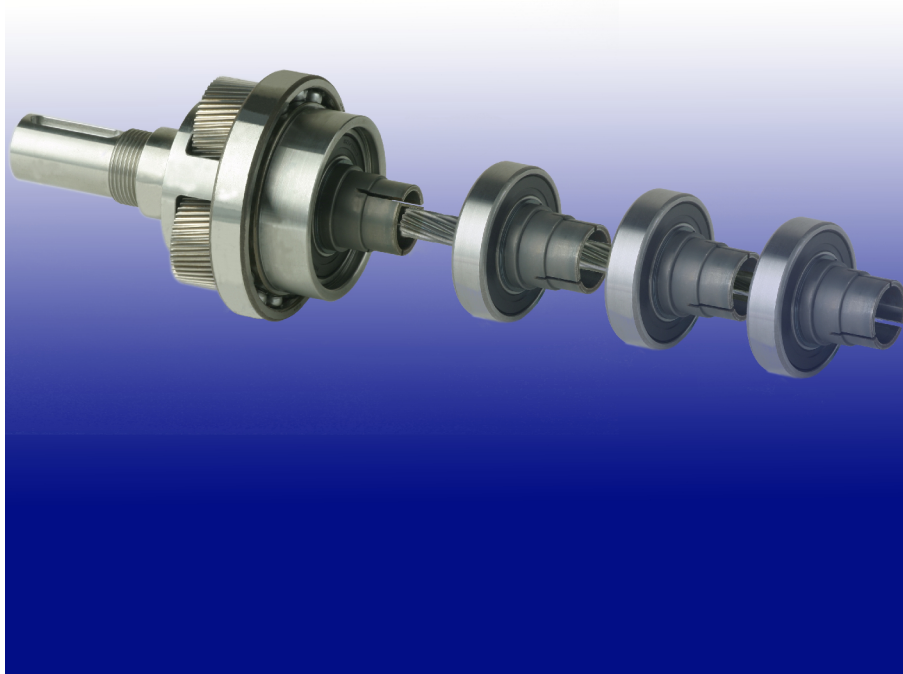
E-Mail: philshaw@apexdynamicsusa.com
Internet: www.apexdynamicsusa.com

NEWS RELEASE

For Immediate Release

Contact: Phil Shaw

PATENT # 6,503,168 – NEW INNOVATION Single Piece Construction Increases System Reliability and Lowers Cost!



All Helical Planetary Gearhead from Apex Dynamics USA., 1363-10 Holbrook, NY (www.apexdynamicsusa.com), carries the only Tip to Toe 5-year warranty in the industry. The inline helical product ranging from 42mm to 220mm square (every single stage ratio 3,4,5,6,7,8,9 & 10:1, and 15:1 thru 100:1) was designed with the recently approved input bearing patent #US 6,503,168.

The patented design enables the integration of the input hub pinion bearing to be placed directly into the rear of the single piece planetary cage assembly allowing for up to 10,000 Rpm's input speed capability.

The manufacturing of the shaft cage assembly and input bearing bore from a single piece of stainless steel on one turning center, off one centerline, guarantees the 100% concentricity needed to provide the highest precision gearhead (less than 1 arc-minute of backlash), with increased efficiencies and smooth, whisper quiet transmission (< 56dB).

Oversized Tapered roller bearing support and full complimented planet needle bearings provide over 30,000 hours of service life and provide up to 6000Nm (53,000 in-lbs) of torque in a compact package.

With the elimination of multiple machine operations, decreased machine set-ups times and quick assembly, the AB series is also the low price leader in its class. The AB series is designed to mount to any servomotor and is deliverable with 2 weeks (guaranteed or its FREE) and replaces most competitive models with substantial cost savings.

The Most Productive Helical Planetary Gearhead Manufacturer in the World!

Please contact Phil Shaw

At Apex Dynamics USA for more information

(631) 244-9040

(631) 244-9030 Fax